



## Seaward PAT Testing Equipment and Training Options

### PrimeTest 350 PAT Solutions Kit

The PrimeTest 350 PAT Tester PAT Solutions kit contains everything you need for effective portable appliance testing housed in a rugged tool case. The included accessories and software really bring the benefits of this advanced tester to life.

The PrimeTest 350 Advanced PAT Solutions kit includes:

- PrimeTest 350 PAT tester
- Portable Test & Tag Elite label printer
- PATGuard Elite 2 software for easy PAT data management
- Bluetooth scanner for quick and easy data entry
- PAT checkbox to verify the tester between periodic calibrations
- Seaward Guide to PAT testing
- Calibration Certificate
- PATGuard Support
- Contract Battery Charger
- Test leads and adaptors
- Rugged tool case
- 5 x 180 asset labels for the Test & Tag Elite printer



City & Guilds 2377-12 Inspection course + Prime Test 350 PAT Solutions Kit - £3450 + vat

City & Guilds 2377 Combined Inspection & Management Course + Prime Test 350 PAT Solution Kit - £3599 + vat

City & Guilds 2377-12 Inspection course + Prime Test 350 only - £1499 + vat

City & Guilds 2377 Combined Inspection & Management Course + Prime Test 350 only - £1575 + vat



**Fibreplus Ltd.**  
Network Specialists



ISO 9001  
REGISTERED FIRM  
Fibreplus Ltd. Registration No. GB18516

# PRIMETEST 350

The most advanced Tester in the world,  
with additional features!



Thanks to the revolutionary PrimeTest 350, you can shorten your working hours. This top of the range tester is derived from the PrimeTest 300 but now has even more features making testing faster and more efficient. Bluetooth technology means it communicates with all your accessory equipment without using wires, and with USB download it's simple to transfer data to a PC. No wires required with this tester, batteries are charged while they're still in the unit, via a charging port. Charging time is just four hours. What's more, it does every test you need and complies to the new updated IET Code of Practice. The PrimeTest 350 can complete Alternative leakage test, 250V insulation test (for use when suppressors or other components prevent a 500V insulation test) and Load measurement. During the protective conductor and touch current tests, the load is measured and displayed as both a power and current measurement. What's more it measures only 26cm x 10cm and weights under 1kg, so no more heavy kit to carry around. With new Carbon Neutral status, we think of this the world's most advanced tester.

## Key Features

- Hand Held
- Load Test
- Battery Powered
- Definable Test
- USB and Bluetooth Download
- In Situ Rechargeable Batteries

## Primetest 350 Users

- PAT Tester
- Electrical Contractors
- Facilities Managers
- Manufacturers

Fibreplus Ltd. Unit 1- 4 Brook Lane, Westbury, Wiltshire, BA13 4ES

(Registered Office in England 04677135 ) VAT No. GB 810 6223 73

Phone :- +44 (0) 1225 636040 - Fax :- +44 (0) 1225 436242 email :- [enq@fibreplus.co.uk](mailto:enq@fibreplus.co.uk)

(Exclusive Supplier of Fujikura Accredited Telecoms Training) [www.fibreplus.co.uk](http://www.fibreplus.co.uk)



## PRIMETEST 350 SPECIFICATIONS

### PAT TESTS

#### Earth Continuity

Test Current	+/- 200mA
Display Range	0.00ohm - 19.99ohm
Pass Value	User Defined

#### Insulation Resistance

Test Voltage	500V / 250V DC @ 1mA nominal
Display Range	0.01Mohm - 199Mohm
Pass Value	User Defined

#### IEC Lead Test

Tests Performed	Earth, Insulation Resistance, Live & Neutral Continuity
-----------------	---------------------------------------------------------

#### Protective Conductor Current/Load

Test Voltage	195V - 230V, 45Hz-60Hz
Display Ranges	0.15mA - 19.99mA 0.00kVA - 4.00kVA 0.00A - 16.00A
Pass Value	User Defined

#### Touch Current/Load

Test Voltage	195V - 230V, 45Hz-60Hz
Display Ranges	0.07mA - 3.5mA 0.00kVA - 4.00kVA 0.00A - 16.00A
Pass Value	User Defined

#### Alternative Leakage Current

Test Voltage	40V, 50Hz
Display Range	0.10mA - 19.99mA
Pass Value	User Defined

#### RCD Trip Time

Test Current	30mA rms, 0°/180° auto switched
Display Range	0ms - 200ms

#### Loop Impedance

Test Current	Non-tripping for >30mA RCD
Display Range	0.0ohm - 199ohm

#### Power Socket Test

Voltage Range	195V - 253V
Voltage Indicators	phase-Earth & phase-neutral

#### General

Memory size	8000 records
Weight	0.9kg
Dimensions	260mm x 100mm x 55mm
Power Source	6 x AA NIMH rechargeable batteries

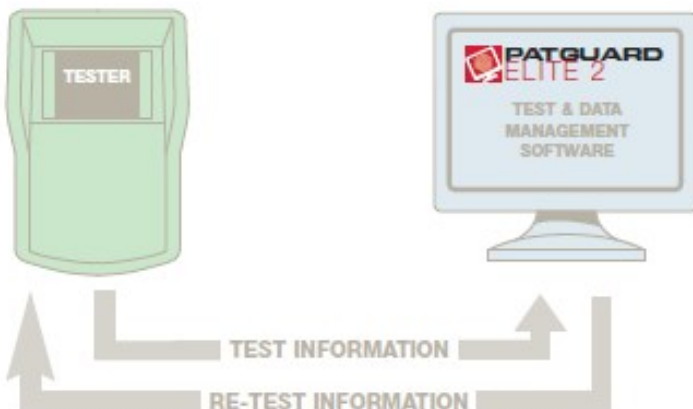


# Fibreplus Ltd.

Network Specialists

## PATGUARD ELITE 2

A top of the line premier software package that is ideal for companies that PAT test on a regular basis or for PAT test service companies. It provides you with quick and easy, complete management of the PAT testing process. One program provides the total solution from the first test, through downloading test results, certificates, planning re-tests and uploading. Its simple to use extensive features include clear re-test identification and optional email alerts for re-testing, which will improve analysis and transparency, helping to increase the speed of your business. It connects directly to your tester and is fast to upload and download. PATGuard Elite 2 uses Windows based management of information so it is easy to learn how to use it.

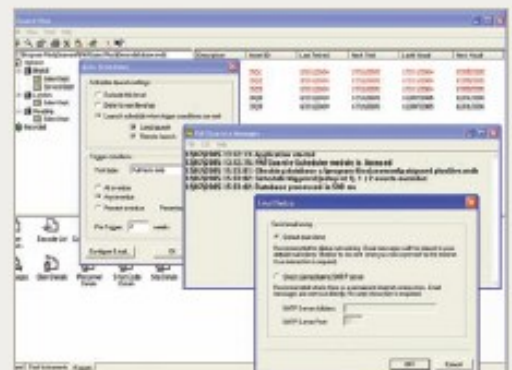


### Key Features

- Automatic record generation
- Icon style display
- Drag & Drop for easy re-location
- Most PAT downloads accepted (all Seaward)
- Database compatibility across range
- Compatible with PATGuard Work About 2
- Acrobat reports
- Network enabled
- Automatic re-location of assets
- Full test history
- Asset tracking
- PATGuard viewer program generator
- Full Seaward PAT upload capabilities
- Automatic re-test scheduler
- Customised email safety alerts
- Full range of printed reports
- Download Preview
- Safety First Express import

### Ideal for the following users

- PAT Service Providers
- Medium/Large Organisations
- Large assets inventory
- Full record requirement



▲ PATGuard Elite 2 features easy to use Auto Scheduling - you will always know when tests and re-tests are required.

Fibreplus Ltd. Unit 1- 4 Brook Lane, Westbury, Wiltshire, BA13 4ES

(Registered Office in England 04677135 ) VAT No. GB 810 6223 73

Phone :- +44 (0) 1225 636040 - Fax :- +44 (0) 1225 436242 email :- [enq@fibreplus.co.uk](mailto:enq@fibreplus.co.uk)

(Exclusive Supplier of Fujikura Accredited Telecoms Training) [www.fibreplus.co.uk](http://www.fibreplus.co.uk)



# Fibreplus Ltd.

Network Specialists

## SUPERIOR SOFTWARE

Our PATGuard 2 software is designed to be highly functional, easy to use and above all, helpful. It is available in three versions, each offering the optimum number of functions depending on your requirements. Each software package will add value to the safety testing facilities you offer your customers or use in-house. This can be achieved by utilising full test records, scheduling and pre-emptive, automated notification.

This means you know exactly where all test equipment is located, its test status, and when it requires re-testing. Add to that our PATGuard Work About 2 software which enables mobile working through your PDA and PATGuard Time Manager 2 for managing test times on the job, and you are in total control.

This cuts down on administrative tasks, it can save a lot of valuable time. So whether you are a large international company or small, local firm, PATGuard 2 software makes economical sense.

To find out more please contact us on 0191 5863511, visit [www.seaward.co.uk](http://www.seaward.co.uk) or email us [sales@seaward.co.uk](mailto:sales@seaward.co.uk).

### Licences:

- Includes Single Licence
- Additional Network Licence (352A918)

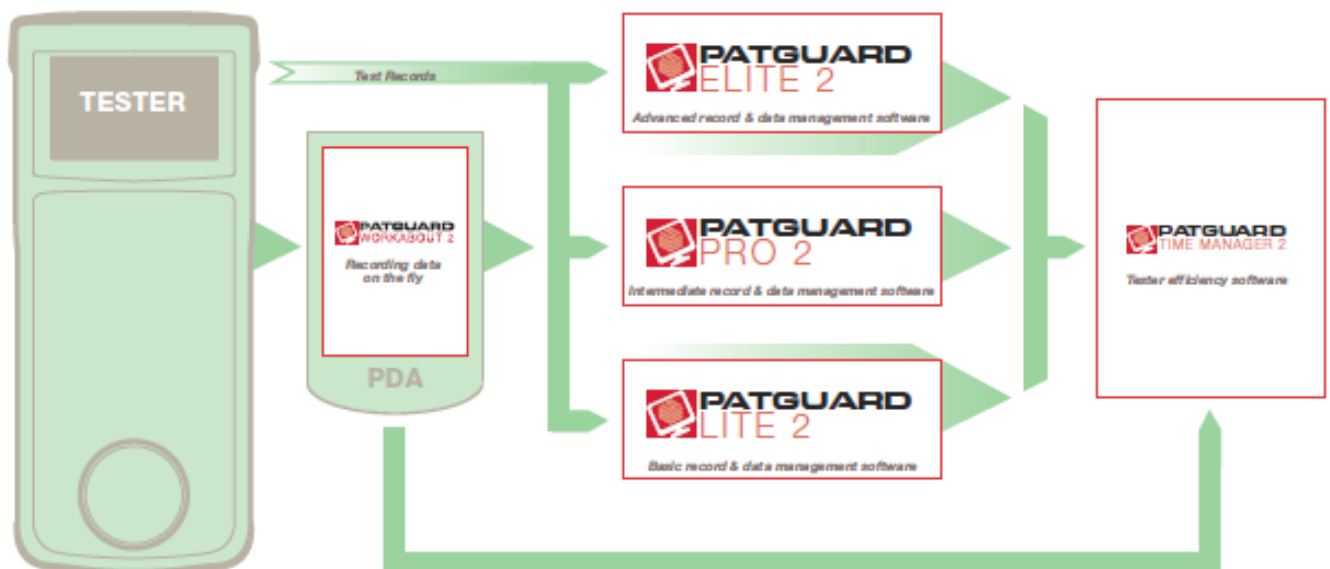
### Further PATGuard 2 software from Seaward:

- PATGuard Lite 2 (352A930)
- PATGuard Pro 2 (352A920)
- PATGuard Work About 2 (336A910)
- PATGuard Time Manager 2 (334A910)
- PATGuard Elite SQL (352A950)

### PATGuard Elite 2 System Requirements:

- IBM Compatible PC
- Processor Speed 500Mhz or higher
- Microsoft Windows XP/VISTA
- 32 & 64 bit operating systems
- 512Mb RAM
- 150Mb available hard disk space
- Colour monitor with 32 bit colour or greater video card
- CD ROM drive

Part number: 352A910



Fibreplus Ltd. Unit 1- 4 Brook Lane, Westbury, Wiltshire, BA13 4ES

(Registered Office in England 04677135 ) VAT No. GB 810 6223 73

Phone :- +44 (0) 1225 636040 - Fax :- +44 (0) 1225 436242 email :- [enq@fibreplus.co.uk](mailto:enq@fibreplus.co.uk)

(Exclusive Supplier of Fujikura Accredited Telecoms Training) [www.fibreplus.co.uk](http://www.fibreplus.co.uk)



**Fibreplus Ltd.**  
Network Specialists

## PrimeTest 250 Pat Testing Kit

The PrimeTest 250 PAT testing kit is based around the most comprehensive manual PAT tester on the market, featuring 3-phase leakage, RCD trip time, touch current and PE conductor current tests. PATGuard Elements software (optional) enables fast manual data-entry for record-keeping of all test results including a full test history against each appliance, and invoice generator - ideal for the efficient running of your PAT business.

The PATBag includes:

- PrimeTest 250 PAT tester
- Rugged and lightweight purpose-made PATBag carry case with compartments for all of your PAT accessories and labels
- Full length PAT Training DVD with online exam and personalised certificate
- Seaward Guide to Portable Appliance Testing, a handy PAT reference look-up card
- PAT Register and Test record for keeping a record of results
- 500 Pass labels
- 500 Fail labels
- 110V adaptor
- Quick start video guide
- Seaward Business Builder CD - everything you need to know to start a PAT testing business



\*Please note the PrimeTest 250 does not have a backlight.

City & Guilds 2377-12 Inspection course + Prime Test 250 PAT Bag Kit - £799 + vat

City & Guilds 2377 Combined Inspection & Management Course + Prime Test 250 PAT Bag Kit - £989 + vat

Fibreplus Ltd. Unit 1- 4 Brook Lane, Westbury, Wiltshire, BA13 4ES

(Registered Office in England 04677135 ) VAT No. GB 810 6223 73

Phone :- +44 (0) 1225 636040 - Fax :- +44 (0) 1225 436242 email :- [enq@fibreplus.co.uk](mailto:enq@fibreplus.co.uk)

(Exclusive Supplier of Fujikura Accredited Telecoms Training) [www.fibreplus.co.uk](http://www.fibreplus.co.uk)



# Fibreplus Ltd.

Network Specialists

## PRIMETEST 250

A comprehensive handheld PAT tester.  
The Engineer's ideal companion.



Seaward's lightweight, portable Primetest 250 PAT tester is unique in its range of safety tests. The Primetest 250 will perform all of the tests required by the IEE Code of Practice, including RCD trip, protective conductor current and touch current where required. The unit also includes a 250V DC insulation test suitable for testing sensitive electrical appliances and surge protected leads.

The Primetest 250 is ideal for ensuring that all workplace electrical equipment does not pose a danger to users -including three-phase machinery. As a result, 3-phase industrial plant and equipment used in factories, workshops, schools and colleges can all be tested safely and effectively.

The unique range of tests incorporated in this lightweight and highly versatile instrument means that most workplace appliances can be tested using long life battery power. However, when protective conductor current or touch current measurements are required, simply connecting a mains supply will automatically select the correct test sequence.

The Primetest 250 is designed for ease of use and carries out all electrical safety tests against pre-set limits with measured test results and clear PASS/FAIL indication on a large display.

The Primetest 250 is an easy-to-use tester which is ideal for those who need to test a wide range of electrical equipment.

\*For 3 phase and RCD testing, accessories are required.

### Key Features

- Easy to use manual PAT tester
- Comprehensive range of tests
- Clear PASS/FAIL indication
- Capable of both equivalent leakage (using battery power) and protective conductor / touch current (using mains power)
- Lightweight
- Automatic test sequences

### Ideal Users

- In-house safety testing engineers
- Electrical Contractors
- Service & Maintenance Engineers

Fibreplus Ltd. Unit 1- 4 Brook Lane, Westbury, Wiltshire, BA13 4ES

(Registered Office in England 04677135 ) VAT No. GB 810 6223 73

Phone :- +44 (0) 1225 636040 - Fax :- +44 (0) 1225 436242 email :- [enq@fibreplus.co.uk](mailto:enq@fibreplus.co.uk)

(Exclusive Supplier of Fujikura Accredited Telecoms Training) [www.fibreplus.co.uk](http://www.fibreplus.co.uk)



## PRIMETEST 250 SPECIFICATIONS

### SPECIFICATIONS

#### Earth continuity

Output Current:	200mA minimum into 2Ω
Test Voltage (o/c):	9V DC nominal
Test Duration (Class I Test):	2s nominal
Display Range:	0.01 ohm to 19.99 ohm
Pass Value (Class I Test):	0.2Ω

#### Insulation resistance

Test Voltage:	250/500VDC @1mA nominal, < 2mA (s/c)
Test Duration (Class I or II):	2s
Display Range:	0.01 Mohm to 19.99 Mohm
Pass Value:	1.0 MΩ Class I 2.0 MΩ Class II

#### Equivalent leakage

Test Voltage:	40V Nominal AC 50Hz Open Circuit
Test Duration:	2s – 30s nominal
Display Range:	0.1 mA to 19.99mA
Pass Value:	0.75mA CLI / 0.25mA CL II

#### IEC lead test

Test voltage:	5V DC nominal
Test Duration:	Time for test (2s max)
Test:	Live / Neutral Checks for o/c, s/c and crossed

#### Protective Conductor Current

Test Voltage:	Supply Voltage, max current 13A
Test Duration:	30s maximum
Display Range:	0.15 mA to 9.99 mA
Pass Value:	0.75mA/3.5mA (user selectable with 0.75mA as default)

#### Touch current

Test Voltage:	Supply Voltage, max current 13A
Test Duration:	30s maximum
Display Range:	0.10 mA to 5.00 mA
Pass Value:	0.25mA

#### 3 phase differential leakage current \*Requires 3 phase adaptor accessory

Test Voltage:	3 phase supply voltage
Test Duration:	Continuous measurement
Display Range:	0.10 mA to 9.99 mA
Pass Value:	3.5mA

#### RCD trip time

Test Voltage:	Mains supply voltage
Test Current:	10mA / 30mA rms sinusoidal
Test Current Phase:	0°/180° auto switched on alternate tests
Measuring Range:	0ms – 500ms
Pass Value:	200ms

#### Power socket check

Input voltage range:	225 – 254V AC max current 13A UK
Indicates configuration of voltage potential:-	Line potential phase to earth Line potential phase to neutral Line potential neutral to earth



# Fibreplus Ltd.

Network Specialists

## PATGUARD ELEMENTS



PATGuard Elements is a manual entry software program designed for use with manual PAT instruments enabling a formal log of PAT test results to be stored and called upon as required.

This intuitive and easy-to-use program is surprisingly clever for an entry level program, boasting several useful features which really improve its usability. One of the main benefits of PATGuard Elements is its capability to create a range of test reports. Another is its test history feature which enables any new test results to be added to the history of an appliance.

An easy set up wizard and upgrade path to the PATGuard Elite downloadable PAT software program make PATGuard Elements a prudent choice for those starting out in PAT testing or with an in-house responsibility.

### Key Features

- Supports manual data entry
- Intuitive and easy to use
- Range of professional test reports
- Full appliance test history for trend analysis
- Upgradeable to PATGuard Elite software program
- Easy set up wizard
- Includes invoice report

### Ideal for the following users

- Care homes
- Schools
- Landlords
- Hotel / Leisure industry
- In-house safety testing engineers
- Electrical Contractors
- Service & Maintenance
- Engineers

### Licences:

- **PATGuard Elements Licence** (387A912)

### Further PATGuard software from Seaward:

- **PATGuard Lite 2** (352A930)
- **PATGuard Pro 2** (352A920)
- **PATGuard Elite 2** (352A910)
- **PATGuard Elite SQL 2** (352A950)

### PATGuard Elements System Requirements:

- **IBM Compatible PC**
- **Processor Speed 500Mhz or higher**
- **Microsoft Windows XP/VISTA/Windows 7**
- **32 & 64 bit operating systems**
- **512Mb RAM**
- **50Mb available hard disk space**
- **Colour monitor with 32 bit colour or greater video card**
- **CD ROM drive**

Fibreplus Ltd. Unit 1- 4 Brook Lane, Westbury, Wiltshire, BA13 4ES

(Registered Office in England 04677135 ) VAT No. GB 810 6223 73

Phone :- +44 (0) 1225 636040 - Fax :- +44 (0) 1225 436242 email :- [enq@fibreplus.co.uk](mailto:enq@fibreplus.co.uk)

(Exclusive Supplier of Fujikura Accredited Telecoms Training) [www.fibreplus.co.uk](http://www.fibreplus.co.uk)